

Anti-H_EGFR hIgG1 Antibody(Necitumumab)

产品信息

GM-49155AB-10	10 µg
GM-49155AB-100	100 µg
GM-49155AB-1000	1 mg

抗体信息

Species Reactivity	Human
Clone	Necitumumab
Source/Isotype	Monoclonal human IgG1, κ
Application	Flow cytometry; ADCC; Block assay; ELISA
Specificity	Detects EGFR.
Gene	EGFR
Other Names	ERBB, ERBB1, ERBB2, HER1, NISBD2, PIG61, mENA
Gene ID	1956 (human); 102138724 (Cynomolgus)
Background	<p>The epidermal growth factor receptor (EGFR; ErbB-1; HER1 in humans) is a transmembrane protein that is a receptor for members of the epidermal growth factor family (EGF family) of extracellular protein ligands. The epidermal growth factor receptor is a member of the ErbB family of receptors, a subfamily of four closely related receptor tyrosine kinases: EGFR (ErbB-1), HER2/neu (ErbB-2), Her 3 (ErbB-3) and Her 4 (ErbB-4). In many cancer types, mutations affecting EGFR expression or activity could result in cancer. Deficient signaling of the EGFR and other receptor tyrosine kinases in humans is associated with diseases such as Alzheimer's, while over-expression is associated with the development of a wide variety of tumors. Interruption of EGFR signalling, either by blocking EGFR binding sites on the extracellular domain of the receptor or by inhibiting intracellular tyrosine kinase activity, can prevent the growth of EGFR-expressing tumours and improve the patient's condition.</p>
Storage	Store at 2-8°C short term (1-2 weeks).Store at \leq -20°C long term. Avoid repeated freeze-thaw.
Formulation	Phosphate-buffered solution, pH 7.2.
Endotoxin	< 1 EU/mg, determined by LAL gel clotting assay

Version:3.3

Data Examples

Flow cytometry

H_EGFR CHO-K1 Cell Line(Catalog # GM-C19964) was stained with Anti-H_EGFR hlgG1 Antibody (Catalog # GM-49155AB) or isotype control antibody, followed by anti-Human IgG APC-conjugated Secondary Antibody.

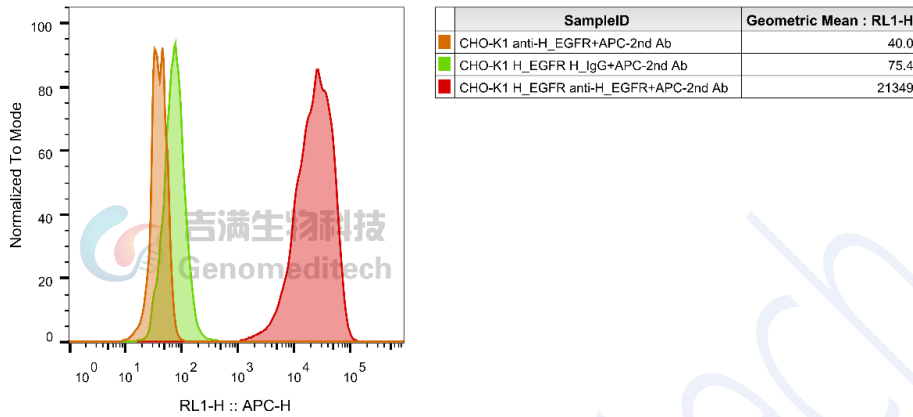


Fig 1. FACS

Flow cytometry

H_EGFR HEK-293 Cell Line (Catalog # GM-C25101) was stained with Anti-H_EGFR hlgG1 Antibody (Catalog # GM-49155AB) or isotype control antibody, followed by anti-Human IgG APC-conjugated Secondary Antibody.

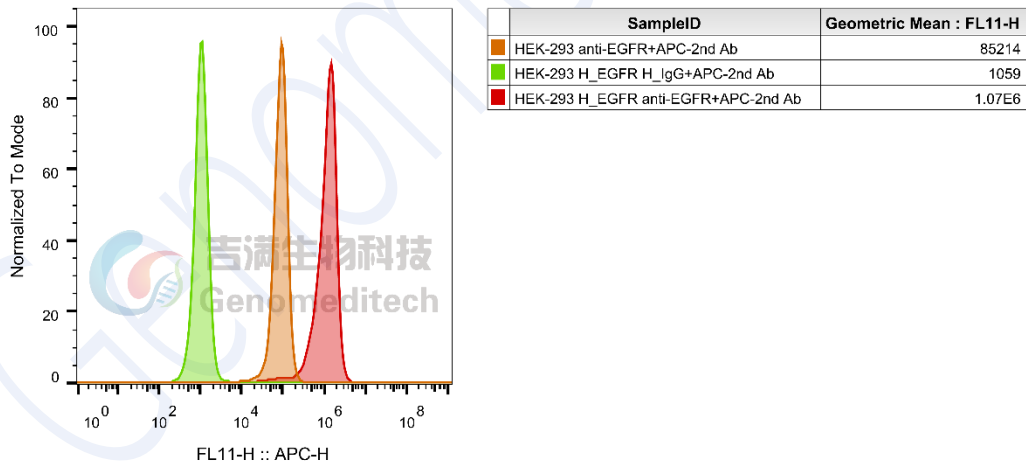


Fig 2. FACS

ADCC

ADCC FcγRIIIa(158V) Jurkat Effector Cell Line (Catalog # GM-C05619) were used as effector cells and H_EGFR CHO-K1 Cell Line (Catalog # GM-C19964) as target cells. Serial dilutions of Anti-H_EGFR hlgG1 Antibody(Necitumumab) (Catalog # GM-49155AB) were added. EC50 for this effect was 0.5851 μg/mL.

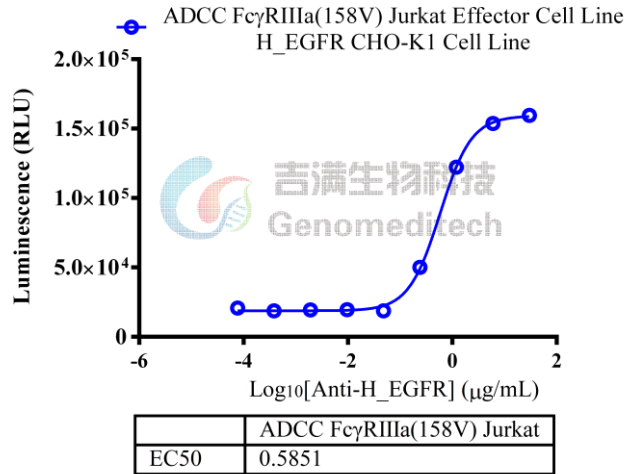


Fig 3. ADCC

Block assay

Firefly luciferase activity in the H_EGFR Reporter Cell Line (Genomeditech/GM-C29969) was measured after 7 hours induction with serial dilutions of Anti-H_EGFR hlgG1 Antibody(Necitumumab) (Genomeditech/GM-49155AB) in the presence of 20 ng/mL Recombinant Human EGF (Beyotime/P5552-100 μ g) , using the GMOne-Step Luciferase Reporter Gene Assay Kit (Genomeditech/GM-040503C) in 96-well format, data is shown by drug mass concentration.

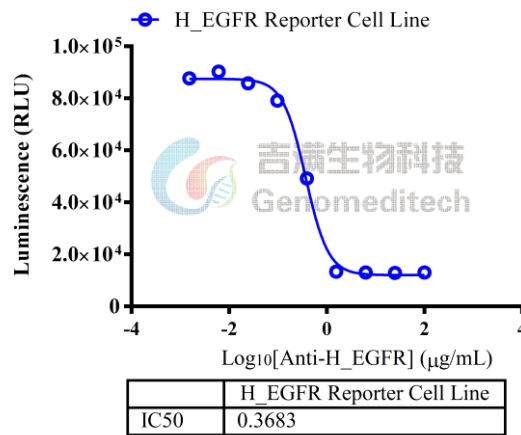


Fig 4. Assay

Bioactivity-ELISA

Biotinylated Human EGFR Protein; His-Avi Tag (Catalog # GM-87562RP) was immobilized at 1 µg/ml (100 µL/well) on streptavidin pre-coated. Increasing concentrations of Anti-H_EGFR hlgG1 Antibody(Necitumumab) (Catalog # GM-49155AB) were added.

Bioactivity-ELISA
 0.1 µg Biotinylated Human EGFR Protein; His-Avi Tag of per well

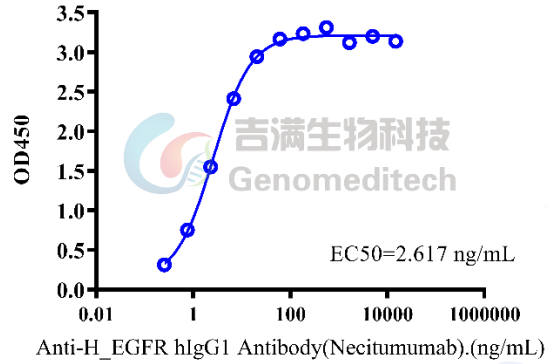


Fig 5. assay

Bioactivity-ELISA

Biotinylated Cynomolgus EGFR Protein; His-Avi Tag (Catalog # GM-87565RP) was immobilized at 1 µg/ml (100 µL/well) on streptavidin pre-coated. Increasing concentrations of Anti-H_EGFR hlgG1 Antibody(Necitumumab) (Catalog # GM-49155AB) were added.

Bioactivity-ELISA
 0.1 µg Biotinylated Cynomolgus EGFR Protein; His-Avi Tag of per well

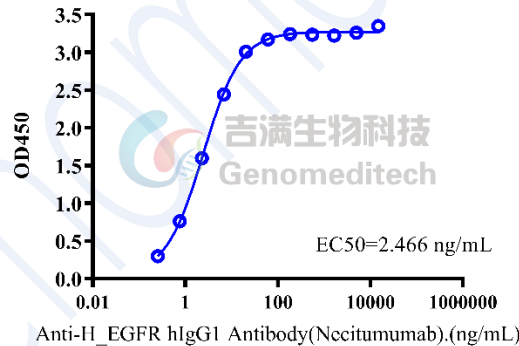


Fig 6. assay